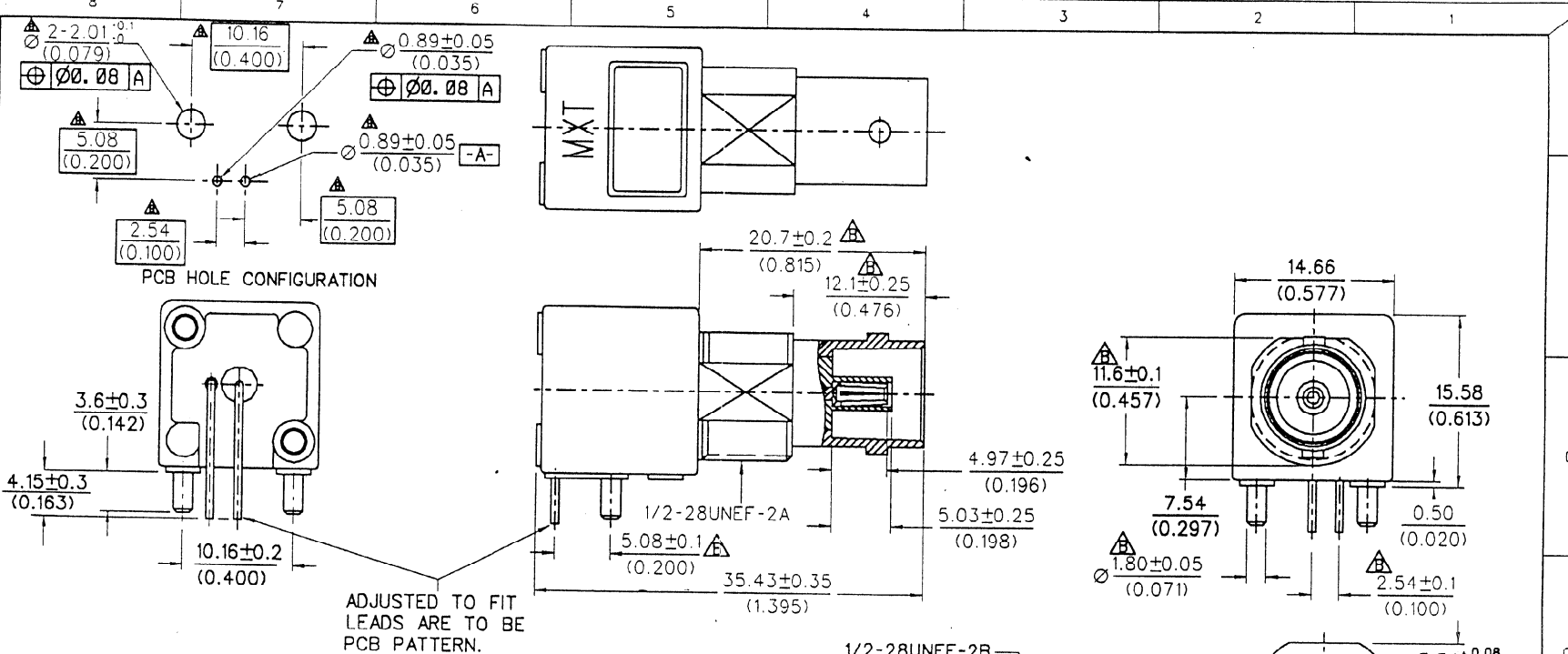


ENC. NO 73100-0080
 EDP NO.
 SIMILAR ITEM
 PROJECT NO 73100-0080
 DO NOT SCALE DRAWING



CONSTRUCTION:
 BODY-----ZINC ALLOY
 CENTER CONTACT---PHOSPHOR BRONZE
 INSULATOR-----POLYPROPYLENE (94V2)
 MOUNTING POST----BRASS
 SOLDER TAIL-----STEEL
 WASHER-----PHOSPHOR BRONZE
 NUT-----BRASS

MATERIALS AND FINISH:
 BODY-----NICKEL PLATING
 CENTER CONTACT---GOLD PLATING
 SOLDER TAIL-----TIN PLATING
 MOUNTING POST----TIN PLATING
 WASHER-----NICKEL PLATING
 NUT-----NICKEL PLATING

MECHANICAL AND ELECTRICAL CHARACTERISTICS: ▲
 PER PRODUCT SPECIFICATION PS-73598-0051

MATERIALS AND FINISH: ▲
 PER PRODUCT SPECIFICATION PS-73598-0051

PACKAGING: ▲
 TRAY

MATERIAL : SEE NOTES		MOLEX TAIWAN LTD. (R.F. DIVISION)
FINISH : SEE NOTES		
SCALE : 2.5:1 UNIT : MM(INCH)		GENERAL TOLERANCES ANGLE : ± 3° DIM. ± 0.25 (± 0.1)
DRAWN BY : <i>Dang</i> 93/02/04		DRW. NO. : SDA-73100-0080
CHK'D BY : <i>Wang</i> 93/02/04		REV : B
LTR	REVISION RECORD	TITLE : 75 OHMS BNC R/A PCB RECEPTACLE (DIE CAST)
ECN	DR / CHK	SHEET 1 OF 1
STANDARD ITEM		